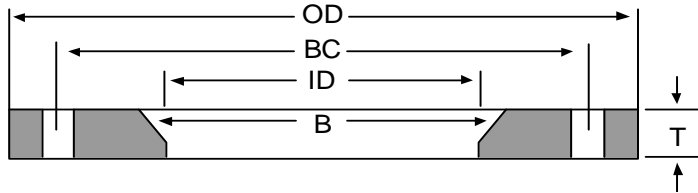




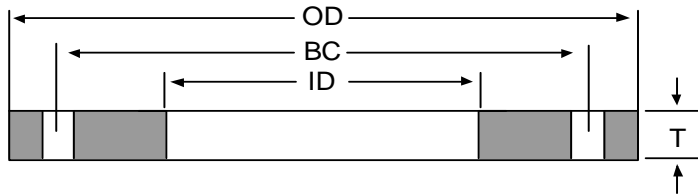
## ASTM A-240 Stainless Steel Plate Flanges

Light Weight Pattern  
 150# Drilling  
 Type 304/304L and 316/316L  
 Back-up Flanges (Type "BEV")  
 Slip-on Flanges (Type "STD")  
 Dimensions in Inches

### Type "BEV"



### Type "STD"



Nominal Pipe Size	Outside Diameter (OD)	Inside Diameter (ID)	Thickness (T)	Bolt Circle (BC)	Hole Diameter	No. of Bolt Holes	45 Degree Bevel (B)	Approx. Weight (lbs)
Drilling Pattern #150								
2	6.00	2.44	0.500	4.75	0.750	4	0.250	3.1
3	7.50	3.57	0.500	6.00	0.750	4	0.250	4.6
4	9.00	4.57	0.500	7.50	0.750	8	0.250	6.2
6	11.00	6.72	0.500	9.50	0.875	8	0.250	7.8
8	13.50	8.72	0.500	11.75	0.875	8	0.250	11.2
10	16.00	10.88	0.500	14.25	1.000	12	0.250	14.0
12	19.00	12.88	0.500	17.00	1.000	12	0.250	20.4

Sizes listed are normal CAB stock items. Larger sizes and specials on application.

#### Corporate Headquarters

CAB Incorporated  
 4161 Chamblee Road, Oakwood, GA USA 30566  
 800/241-7311 770/965-8180 Fax 770/965-8175  
[www.cabinc.com](http://www.cabinc.com) email: [sales@cabinc.com](mailto:sales@cabinc.com)

#### Texas Manufacturing Facility

CAB Incorporated  
 2306 Rayburn Drive, Nacogdoches, TX USA 75961  
 800/435-2643 936/569-9430 Fax 936/569-0795