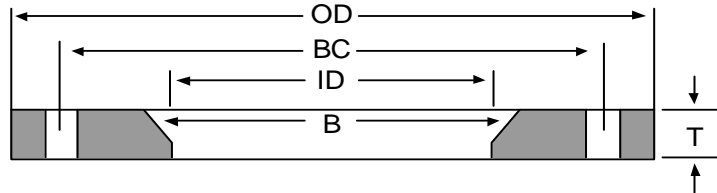




ASTM A-536 Ductile Iron Back-up Flanges

Light Weight Pattern
 150# Drilling
 Angle Face Rings (AFR) Stub-Ends (IPS)
 Primer - Painted and Hot-Dip Galvanized



Nominal size	Inside Diameter (ID)		Outside Diameter (OD)	Thickness (T)	Bolt Circle (BC)	Hole Diameter	No. of Bolt Holes	45 Degree Bevel (B)	Weight Each (lbs)
	AFR	IPS							
					Drilling Pattern #150				
1/2		0.90	3.50	0.50	2.38	0.625	4	0.250	1.0
3/4		1.11	3.88	0.50	2.75	0.625	4	0.250	1.4
1	1.75	1.38	4.25	0.50	3.13	0.625	4	0.250	1.7
1 1/4	2.00	1.72	4.63	0.50	3.50	0.625	4	0.250	1.8
1 1/2	2.25	1.97	5.00	0.50	3.88	0.625	4	0.250	2.0
2	2.80	2.46	6.00	0.50	4.75	0.750	4	0.250	3.0
2 1/2	3.31	2.97	7.00	0.50	5.50	0.750	4	0.250	3.9
3	3.94	3.60	7.50	0.50	6.00	0.750	4	0.250	4.0
4	4.94	4.60	9.00	0.56	7.50	0.750	8	0.250	6.5
5	6.10	5.69	10.00	0.63	8.63	0.875	8	0.250	7.0
6	7.20	6.75	11.00	0.63	9.50	0.875	8	0.250	8.0
8	9.25	8.75	13.50	0.63	11.75	0.875	8	0.312	11.5
10	11.44	10.95	16.00	0.63	14.25	1.000	12	0.312	15.0
12	13.44	12.95	19.00	0.75	17.00	1.000	12	0.312	26.0
14	14.81	14.20	21.00	0.75	18.75	1.125	12	0.312	34.0
16	16.91	16.20	23.50	0.75	21.25	1.125	16	0.375	37.0
18	18.91	18.20	25.00	0.88	22.75	1.250	16	0.375	42.0
20	20.91	20.25	27.50	0.88	25.00	1.250	20	0.375	51.0
24	24.91	24.25	32.00	1.00	29.50	1.375	20	0.375	76.0
30	30.91	30.25	38.75	1.00	36.00	1.375	28	0.500	104.0
36	36.91	36.25	46.00	1.13	42.75	1.625	32	0.500	150.0
42	42.91	42.28	53.00	1.25	49.50	1.625	36	0.500	208.0
48	48.91	48.28	59.50	1.25	56.00	1.625	44	0.500	246.0

Physical Properties (minimum)

Tensile Strength: 65,000 psi

Yield Strength: 45,000 psi

Elongation: 10%

Corporate Headquarters

CAB Incorporated
 5411 Cole Road, Buford, GA USA 30518
 800-241-7311 678-745-2100 Fax 678-745-2082
www.cabinc.com email: sales@cabinc.com

Texas Manufacturing Facility

CAB Incorporated
 2306 Rayburn Drive, Nacogdoches, TX USA 75961
 800-435-2643 936-569-9430 Fax 936-569-0795