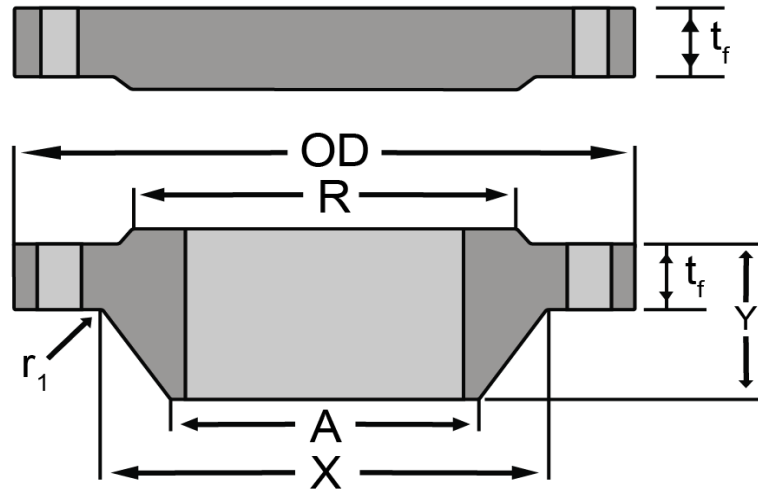




ASME B16.47 - 2017
Dimensions of Class 150 Series B Flanges



Nominal Size	Outside Diameter (OD)	Minimum Thickness of Flange, (t_f)		Length Through Hub (Y)	Hub Dia. Base (X) (Note2)	Hub Dia. Top (A)	Raised Face Dia. (R)	Drilling			Minimum Fillet Radius, (r_1)	
		[Note (1)] WNF	Blind					Bolt Circle Diameter	No. of Bolt Holes	Dia. of Bolt Hole		
26	30.94	1.57	1.69	3.44	26.94	26.06	28.00	29.31	36	$7/8$	$3/4$	0.38
28	32.94	1.69	1.82	3.69	28.94	28.06	30.00	31.31	40	$7/8$	$3/4$	0.38
30	34.94	1.69	1.94	3.88	31.00	30.06	32.00	33.31	44	$7/8$	$3/4$	0.38
32	37.06	1.75	2.07	4.19	33.06	32.06	34.00	35.44	48	$7/8$	$3/4$	0.38
34	39.56	1.88	2.19	4.28	35.12	34.06	36.25	37.69	40	1	$7/8$	0.38
36	41.62	2.00	2.25	4.57	37.19	36.06	38.25	39.75	44	1	$7/8$	0.38
38	44.25	2.07	2.44	4.82	39.25	38.12	40.25	42.12	40	$1 1/8$	1	0.38
40	46.25	2.13	2.57	5.00	41.31	40.12	42.50	44.12	44	$1 1/8$	1	0.38
42	48.25	2.25	2.63	5.19	43.38	42.12	44.50	46.12	48	$1 1/8$	1	0.44
44	50.25	2.32	2.75	5.32	45.38	44.12	46.50	48.12	52	$1 1/8$	1	0.44
46	52.81	2.38	2.88	5.63	47.44	46.12	48.62	50.56	40	$1 1/4$	$1 1/8$	0.44
48	54.81	2.50	3.00	5.82	48.50	48.12	50.75	52.56	44	$1 1/4$	$1 1/8$	0.44
50	56.81	2.63	3.13	6.00	51.50	50.12	52.75	54.56	48	$1 1/4$	$1 1/8$	0.44
52	58.81	2.69	3.25	6.13	53.56	52.12	54.75	56.56	52	$1 1/4$	$1 1/8$	0.44
54	61.00	2.75	3.38	6.32	55.62	54.12	56.75	58.75	56	$1 1/4$	$1 1/8$	0.44
56	63.00	2.82	3.50	6.50	57.69	56.12	58.75	60.75	60	$1 1/4$	$1 1/8$	0.56
58	65.94	2.88	3.62	6.82	59.69	58.12	60.75	63.44	48	$1 3/8$	$1 1/4$	0.56
60	67.94	2.94	3.75	7.00	61.81	60.12	63.00	65.44	52	$1 3/8$	$1 1/4$	0.56

GENERAL NOTES:

Dimensions are in inches.

- 1) The minimum flange thickness does not include the raised face thickness
- 2) This dimension is for the large end of hub, which may be straight or tapered.
- 3) Weldneck Bore/ID is to be specified by purchaser
- 4) For other details and tolerances see specification.

Corporate Headquarters & Sales Office

CAB Incorporated
 5411 Cole Road Buford, GA USA 30518
 800/241-7311 678/745-2100 Fax 678/745-2082
 www.cabinc.com email: sales@cabinc.com

Texas Manufacturing Facility & Sales Office

CAB Incorporated
 2306 Rayburn Drive, Nacogdoches, TX USA 75961
 800/435-2643 936/569-9430 Fax 936/569-0795