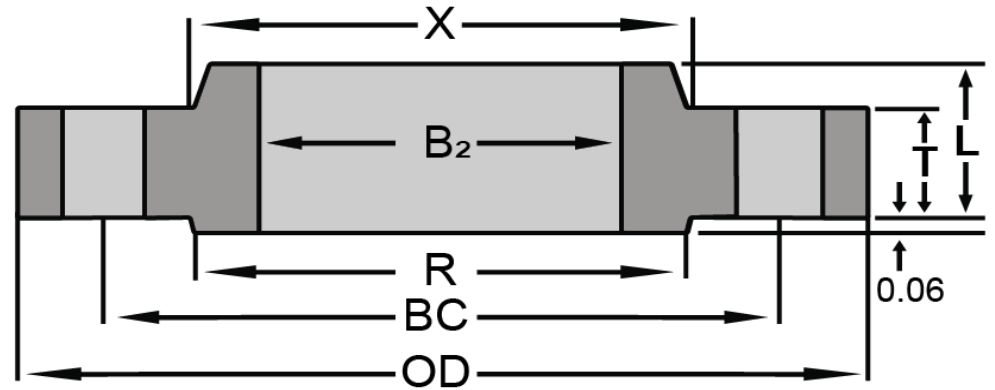
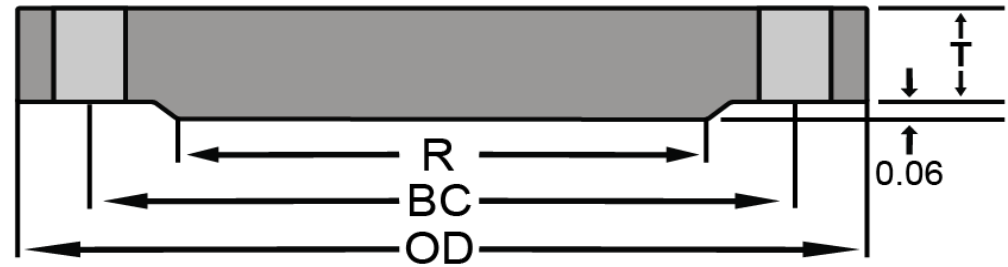
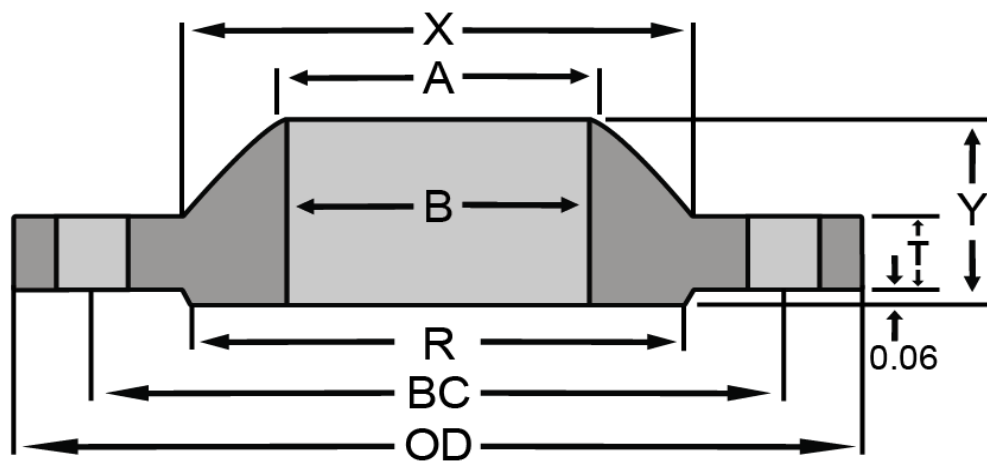




**Class 175 Industry Standard**



Nominal Size	Outside Diameter (OD)	Thickness (T)			Raised Face Dia. (R)	Hub Diameter (X)	Bore		Length		Hub Diameter at Bevel (A)	Drilling Dia. of Holes	No. of Holes	Approx. Weight (lbs)		
		Weld Neck	Slip-On	Blind			(B)	(B <sub>2</sub> )	Through Hub Weld Neck (Y)	Slip-On (Y <sub>2</sub> )				Weld Neck	Slip-On	Blind
26	31.50	1.38	1.38	1.78	29.00	27.63	26.25	3.38	2.75	29.88	0.88	28	120	105	405	
28	33.50	1.38	1.38	2.00	31.00	29.63	28.25	3.38	2.75	31.88	0.88	28	130	115	490	
30	35.75	1.38	1.38	2.13	33.25	31.88	30.25	3.63	2.75	34.13	0.88	36	150	130	590	
32	37.75	1.38	1.38	2.25	35.25	33.88	32.25	3.63	2.75	36.13	0.88	36	160	140	700	
34	40.25	1.50	1.75	2.38	37.38	35.88	34.25	3.75	3.38	38.38	1.00	36	195	200	840	
36	42.25	1.50	1.75	2.50	39.38	37.88	36.25	3.75	3.38	40.38	1.00	36	205	210	970	
38	44.25	1.75	2.00	2.63	41.38	39.88	38.25	4.13	3.75	42.38	1.00	36	245	250	1125	
40	46.25	1.75	2.00	2.75	43.38	41.88	40.25	4.13	4.00	44.38	1.00	40	255	270	1300	
42	49.00	2.00	2.38	2.88	45.75	44.13	42.25	4.50	4.38	46.88	1.13	40	340	365	1500	
44	51.00	2.00	2.38	3.00	47.75	46.13	44.25	4.50	4.38	48.88	1.13	40	360	380	1700	
46	53.00	2.00	2.38	3.13	49.75	48.13	46.25	4.50	4.63	50.88	1.13	40	375	410	1925	
48	55.00	2.25	2.63	3.38	51.75	50.13	48.25	4.88	4.88	52.88	1.13	44	430	460	2225	
50	57.00	2.25	2.63	3.38	53.75	52.13	50.25	4.88	4.88	54.88	1.13	44	450	480	2400	
52	59.50	2.63	3.00	3.63	56.00	54.25	52.25	5.38	5.38	57.25	1.25	44	560	600	2800	
54	61.50	2.63	3.00	3.63	58.00	56.25	54.25	5.38	5.38	59.25	1.25	44	580	620	3000	
60	67.50	2.75	3.13	4.00	64.00	62.25	60.25	5.75	5.88	65.25	1.25	48	680	730	4000	
66	73.50	3.13	4.00	4.38	70.00	68.50	66.25	6.13	6.88	71.25	1.25	56	830	1000	5175	
72	80.00	3.63	5.00	4.75	76.50	74.50	72.25	6.63	8.00	77.25	1.25	64	1075	1400	6650	

To be specified by purchaser.

To be established by design requirements.

Dimensions are in inches.

**Corporate Headquarters & Sales Office**

CAB Incorporated  
 5411 Cole Road Buford, GA USA 30518  
 800/241-7311 678/745-2100 Fax 678/745-2082  
 www.cabinc.com email: sales@cabinc.com

**Texas Manufacturing Facility & Sales Office**

CAB Incorporated  
 2306 Rayburn Drive, Nacogdoches, TX USA 75961  
 800/435-2643 936/569-9430 Fax 936/569-0795