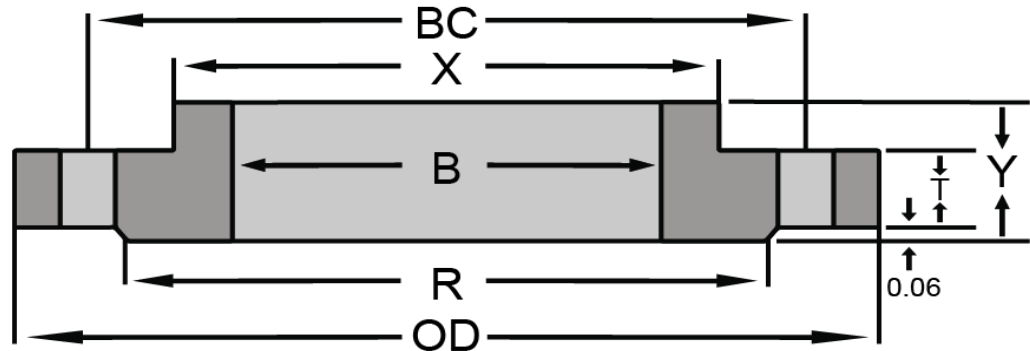




Tube Turns Design 300# Slip On



Nominal Size	Outside Diameter (OD)	Thickness (T)	Length Through Hub (Y)	Hub Diameter (X)	No. of Holes	Dia. of Holes	Bolt Circle (BC)	Raised Face Dia. (R)	Fillet Rad. Min.	Bore (B)
26	38.25	3.12	5.37	30.25	28	1.75	34.5	29.5	0.38	26.25
28	40.75	3.38	5.68	32.75	28	1.75	37	31.5	0.44	28.25
30	43	3.62	6.12	34.75	28	1.88	39.25	33.75	0.44	30.25
32	45.25	3.88	6.56	36.75	28	2	41.5	36	0.44	32.25
34	47.5	4	6.81	38.75	28	2	43.5	38	0.5	34.25
36	50	4.12	7.06	41	32	2.12	46	40.25	0.5	36.25
38	46	5.31	6.06	39	32	1.62	43	40.5	0.5	38.25
40	48.75	5.56	6.56	41.25	32	1.75	45.5	42.75	0.5	40.25
42	50.75	5.81	6.81	43.25	32	1.75	47.5	44.75	0.5	42.25
44	53.25	6.06	6.86	45.25	32	1.88	49.75	47	0.5	44.25
46	55.75	6.31	7.06	47.25	28	2	52	49	0.5	46.25
48	57.75	6.56	7.18	49.25	32	2	54	51.25	0.5	48.25

Dimensions are in inches.

Originally appeared in Tube Turns Catalog

Stress Calculations are per ASME Section VIII Division 1

The .06" raised face is included in thickness "T" and length through hub "Y"

Facing and Drilling match ASME B16.47 Series A (formerly MSS SP 44) flanges

Tube Turns Catalog Indicates 740 PSI pressure rating at atmospheric temperature

Corporate Headquarters & Sales Office

CAB Incorporated

5411 Cole Road Buford, GA USA 30518

800/241-7311 678/745-2100 Fax 678/745-2082

www.cabinc.com email: sales@cabinc.com

Texas Manufacturing Facility & Sales Office

CAB Incorporated

2306 Rayburn Drive, Nacogdoches, TX USA 75961

800/435-2643 936/569-9430 Fax 936/569-0795